



# PRODUCT GUIDE

PUMPS • TANKS • FILTRATION



**NATIONAL**  
TANK & EQUIPMENT  
■ Part of Atlas Copco Group

**NTRENTS.COM**  
**888.213.7950**



# ABOUT NATIONAL TANK & EQUIPMENT

## COMPLETE FLUID SOLUTIONS

When you need fluid solutions, count on NTE to offer the support for your industrial or commercial job site.

With branches throughout the United States and the newest and fastest-growing fleet in the industry, you can count on NTE to provide the equipment & expertise to get the job done.



## NTE WORKS FOR YOU 24/7/365



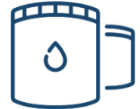
**RENTAL**



**SALES**



**SERVICE**



**SOLUTIONS**



## OUR INDUSTRIES

- ✓ Industrial
- ✓ Environmental
- ✓ Waste Management
- ✓ Energy
- ✓ Oil & Gas



## WHY CHOOSE NTE?

### OUR PEOPLE

We know fluid solutions and are prepared to take on any job, any time, anywhere.

We've cultivated our team to serve as both product and industry experts.



### OUR FLEET

We have the most meticulously inspected and highest-quality fleet in the market plus our strong relationships with the best manufacturers in the business.



### OUR SOLUTIONS

Delivering efficient and effective fluid solutions is more of a science than ever before. We make precise work of building custom solutions that meet your job-specific requirements.





## HIGH VOLUME PUMPS

Our fleet of high-volume pumps are robustly designed to exact specifications through a thorough engineering process undertaken in collaboration with top manufacturers. Best-in-class run-dry mechanical seals and rapid pump priming systems allow for peak performance across various applications.

### Features include:

- Vac-Assisted Packages 4" – 24"
- Flow Rates up to 33,000 GPM
- Total Dynamic Head up to 250'/108 PSI
- Programmable Auto-Start/Stop Panels
- Stainless (✱) & Electric (⚡) Options Available



Size in.	Max Flow GPM	Max TDH ft.	Max Solids in.
4 x 4 ⚡	1,520	150	3
6 x 6 ⚡✱	2,825	195	3
Super 6 x 6 ⚡✱	3,170	225	3
8 x 8	4,000	250	3.38
Super 8 x 8 ⚡✱	4,630	258	3.375
12 x 12 ⚡	10,300	142	3.6
Super 12 x 12	9,500	325	3.75
14 x 14	12,000	148	4.25
18 x 18	19,000	220	4.5
24 x 24	33,000	135	5.3

Available in Stainless Steel (✱) / Electric (⚡)





## HIGH HEAD PUMPS

High pressure fluid handling requires special pump packages designed for high head applications. If your job requires pumping over long distances or overcoming a pressurized header system, we offer the high pressure pumps to handle it.

### Features include:

- Vac-Assist Packages 4" – 12"
- Flow Rates up to 12,000 GPM
- Total Dynamic Head up to 755'/327 PSI
- Programmable Auto-Start/Stop Panels
- Stainless (✱) & Electric (⚡) Options Available



Size in.	Max Flow GPM	Max TDH ft.	Max Solids in.
4 x 3	675	700	0.78
Super 4 x 3 ⚡	600	575	0.75
5 x 3	845	285	0.75
6 x 3 ✱	1,090	460	0.75
6 x 4 ⚡	3,125	500	3
Super 6 x 4	1,500	675	0.88
8 x 6	3,700	460	2
Super 8 x 6 ✱	3,610	601	1.5
10 x 8 ⚡✱	7,000	380	3.5
12 x 8	12,000	720	3
Super 12 x 8	10,000	520	3
12 x 10	11,000	550	4
Super 12 x 10	11,000	550	4

Available in Stainless Steel (✱) / Electric (⚡)

# ALWAYS LEAD, NEVER FOLLOW



# PUMPS

## SOUND-ATTENUATED PUMPS

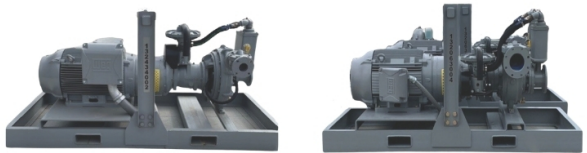
Registering at a comfortable 68 dBA at 23 feet, silent pumps deliver all the performance of our standard fleet in a fully enclosed, skid or trailer-mounted unit.



Size in.	Max Flow GPM	Max TDH ft.	Max Solids in.
4 x 4	1,300	122	3
6 x 6	2,400	200	3
8 x 8	4,000	250	3.38
12 x 12	6,300	225	4
14 x 14	13,800	178	4.25
18 x 18	13,800	178	4.25
Super 18 x 18	18,000	220	4.5

## ELECTRIC PUMPS & VFD OPTIONS

- Electric-driven pumps reduce operating costs and are a reliable pump option
- Variable frequency drives (VFDs) create efficiencies and provide energy savings



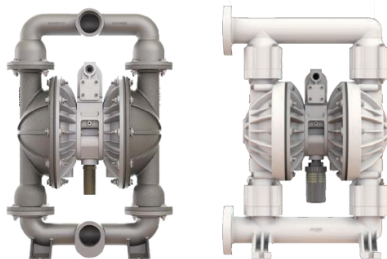
Size in.	Max Flow GPM	Max TDH ft.	Max Solids in.
Super 4 x 3	675	700	0.78
4 x 4	1,520	150	3
6 x 4	3,125	460	0.75
6 x 6	3,000	240	3
6 x 6 with VFD	3,000	240	3
Super 6 x 6	3,300	275	3
Super 8 x 8	4,630	258	3.375
10 x 8	5,100	350	3.38
12 x 12	6,300	225	4



# PUMPS

## AIR-OPERATED DIAPHRAGM PUMPS

These easy to install, portable pumps are a versatile option for a variety of pump applications. With various material construction and sizes available, let NTE help find the right AOD pump to meet your intermittent fluid transfer demands.



Size in.	Material	Max Flow GPM	Operating PSI	Weight lbs.
1	Aluminum/Buna	49	125	27
1	Polypropylene/Teflon	36	100	17
1	Stainless Steel/Teflon	38	125	38
2	Aluminum/Buna	185	125	65
2	Polypropylene/Teflon	145	100	69
2	Stainless Steel/Teflon	157	125	114
3	Aluminum/Buna	234	125	108
3	Polypropylene/Teflon	280	100	208
3	Stainless Steel/Teflon	186	125	245

## HYDRAULIC SUBMERSIBLE PUMPS

Ideal for pump applications where suction lift exceeds 28 feet or where suction lifts are too great for standard centrifugal pumps, hydraulic submersible pumps are designed to handle high volumes of water, sludge, trash, raw sewage, and industrial effluent.



Size in.	Max Flow GPM	Max TDH ft.	Max Solids in.
3 x 3	400	73	0.75
4 x 4	1,000	175	3.5
6 x 6	1,900	125	3

**ALWAYS LEAD, NEVER FOLLOW**



## ELECTRIC SUBMERSIBLE PUMPS

Electric submersible pumps are capable of handling all types of hazardous and non-hazardous fluids as well as viscous slurries with ease.

**Features include:**

- 2 - 10" Sizes
- Max Flow 5,500 GPM
- Max 340' TDH/147 PSI
- 2 - 94 Horsepower
- Auto-Start/Stop Control Panel & Float Switches
- Built-In Thermal Overload Protection
- Stainless Steel Models Available



## WELLPOINT PUMPS

Wellpoint pumps are specifically designed and engineered for construction wellpoint and sock dewatering with high air handling, large water volume, and high vacuum capability.



Size in.	Max Flow GPM	Max TDH ft.	Max Solids in.
6 x 6 Piston	400	66	Clear Water Only
8 x 8 Rotary	1,300	120	Clear Water Only
12 x 12 Rotary	2,200	120	Clear Water Only

## SLUDGEMASTER PUMPS

The Sludgemaster is designed to pump highly viscous materials and the toughest slurries with ease.

**Features include:**

- 4" Suction & Discharge
- 250 GPM Max Flow
- 346' Max TDH
- 3.5" Solids Handling Capacity





# HOSES, PIPES & FITTINGS



## Chemical Hose

- > Size: 2 - 8"
- > Max PSI: 200
- > Tube Material: UHMW Polyethylene
- > Fittings: SST 150# Flange, SST Camlock



## Composite Hose

- > Size: 3-12"
- > Max PSI: 250
- > Tube Material: Multi-Layered Polypropylene Fabric
- > Fittings: 150# Flange, Camlock



## Layflat Hose

- > Size: 2 - 12"
- > Max PSI: 150
- > Tube Material: Oil-Resistant Rubber
- > Fittings: Camlock, Quick-Connect, Victaulic



## OSD Hose

- > Size: 3 - 14"
- > Max PSI: 250
- > Tube Material: Nitrile
- > Fittings: 150# Flange, 300# Flange



## Stainless Steel Braided Hose

- > Size: 3/4 - 12"
- > Max PSI: 200 - 400
- > Tube Material: 316 Stainless Steel
- > Fittings: 150# Flange, 300# Flange



## Tank Truck Hose

- > Size: 2 - 8"
- > Max PSI: 150
- > Material: Nitrile
- > Fittings: 150# Flange, Camlock, Quick-Connect



# HOSES, PIPES & FITTINGS



## Quick-Connect Pipe

- > Size: 4 - 12"
- > Max PSI: 175
- > Material: Laminated Steel



## HDPE Pipe

- > Size: 4 - 36"
- > Max PSI: 65 - 130
- > Material: DR 17 - DR 32

## FITTINGS





NTE's tanks and boxes can be utilized as temporary storage for a variety of industrial and commercial applications, including:

- ✓ Construction Runoff
- ✓ Cooling Tower Cleaning
- ✓ Wastewater Storage & Treatment
- ✓ Environmental Remediation
- ✓ Hydrotesting & Pipeline Integrity Testing
- ✓ Tank Cleaning
- ✓ Turnaround Temporary Storage



# CLOSED TOP TANKS

Vapor Tight Smooth Wall, Round Bottom, Mini Frac (200 BBL/8,400 Gallon) Tanks Available  
Standard 500BBL/21,000 Gallon Capacity

## MINI FRAC TANKS

- Ideal liquid storage solution for tight job site areas
- Adds liquid capacity where space is limited
- Versatile unloading options: roll-off truck, crane, and forklift
- Can be placed in areas unsuitable for larger 21,000-gallon tanks



Type	Capacity
200 BBL Mini Frac Tank	8,500 gal (198 BBL)
200 BBL Steam Coil Mini Frac Tank	8,327 gal (200 BBL)
240 BBL Mini Frac Tank	10,080 gal (240 BBL)

## V-BOTTOM TANKS

- V-shaped bottom design for complete drainage and easy cleaning
- Ideal for storing fluids with sediments or solids
- Facilitates easy removal of settled materials



Type	Capacity
500 BBL V-Bottom Frac Tank	21,000 gal (500 BBL)
500 BBL V-Bottom Smooth Wall Frac	21,000 gal (500 BBL)
500 BBL Unlined V-Bottom Smooth Wall Frac	21,000 gal (500 BBL)

## ROUND BOTTOM TANKS

- Designed with a rounded bottom floor for complete drainage
- Ensures efficient emptying of liquids like water, chemicals, or proppants
- Eliminates the need for significant tilting of the tank
- Ideal for fluid storage and transportation on job sites



Type	Capacity
500 BBL Round Bottom Frac Tank	21,000 gal (500 BBL)



# OPEN-TOP TANKS

Weir Tanks, Gas Busters, Mud Tanks Available  
250, 400, 500 BBL/10,500, 16,800, and 21,000 Gallon Capacities

## WEIR TANKS

- Designed for oil or particulate separation
- Features over-and-under weirs
- Standard V-shaped floor for easy and complete drainage



Type	Capacity	Tare
400 BBL Open Top Weir Tank	17,826 gal (430 BBL)	27,000 lbs
500 BBL Open Top Weir Tank	21,000 gal (500 BBL)	26,000 lbs

## GAS BUSTER TANKS

- OSHA-compliant gas buster tanks
- Decelerates the flow of gas and fluids to reduce hazardous electrical charges and dangerous blowouts
- Ideal for operations requiring elevated levels of gas venting



Type	Capacity
500 BBL Open Top Gas Buster Tank - Dual	17,286 gal (424 BBL)
500 BBL Open Top Gas Buster Tank - Quad	17,286 gal (424 BBL)



**ALWAYS LEAD, NEVER FOLLOW**



# SPECIALTY TANKS

## DOUBLE-WALLED TANKS

- For Specialty Fluid Storage Applications
- Built-In Secondary Containment for Environmental Protection
- Standard 450 BBL/18,900 Gallon Capacity



Type	Capacity	Tare
200 BBL Double Wall Mini Frac Tank	7,200 gal (170 BBL)	18,000 lbs
500 BBL Double Wall Frac Tank	18,430 gal (438 BBL)	-

## STAINLESS STEEL TANKS

- Hazardous & Non-Hazardous Fluid Storage
- Containment when Temperature & Fluid pH are Factors
- Standard 500 BBL/21,000 Gallon Capacity



Type	Capacity	Tare
500 BBL Stainless Steel Frac	21,000 gal (500 BBL)	26,000 lbs

## MIX TANKS

- Steam Coil Options Available
- Standard 500 BBL/21,000 Gallon Capacity
- Vertical Mix Tanks Offer 350 BBL/14,700 Gallon Capacity



Type	Capacity	Tare
400 BBL Pre-Mix Tank	16,800 gal	29,500 lbs
500 BBL Mixing Tank	17,630 gal	32,000 lbs

## POLY TANKS

- Portable with Steel Cage Protection
- Caustic or Acidic Fluid Containment
- 150 BBL/6,300 (Single), 300 BBL/12,600 (Double) Gallon Capacities



Type	Capacity
Crosslinked PE Roll-Off Tank (Poly Tank)	6,300 gal (150 BBL)



# SPECIALTY TANKS

## STEAM COIL TANKS

- Used to store and heat fluids (typically water or oil)
- Internal coils allow for indirect heating using steam, maintaining fluid temperature in cold environments



Type	Capacity	Tare
200 BBL Steam Coil Mini Frac Tank	8,327 gal	15,000 lbs
500 BBL Steam Coil Frac Tank	21,000 gal	27,000 lbs

## STAINLESS STEEL TANKER TRAILERS

- Industrial Storage/Waste Transport Applications
- 316 Stainless Steel Construction
- Liquid Level Gauge
- 2" Vapor Recovery Line
- Standard 167 BBL/7,000 Gallon Capacity



## VERTICAL TANKS

The advantages of vertical frac tanks are numerous. Their smaller footprint allows for maximum fluid storage in tight spaces. They are also easily transportable, eliminating costly and time intensive load permits.

- Optimizes Storage in a Smaller Footprint
- Steam Coil Options Available
- Standard 350 BBL/14,700 Gallon Capacity
- Level Monitoring and Alerts



Type	Capacity	Weight
350 BBL Vertical Frac Tank	14,700 gal (350 BBL)	14,900 lbs (empty)



**ALWAYS LEAD, NEVER FOLLOW**



# BOXES & CONTAINERS

## ROLL-TARP BOXES

- Tarped or Watertight Options Available
- 25 Yard Capacity
- Liner options available



Type	Capacity	Tare
Roll Tarp - 25 Yard	5,049 gal	6,950 lbs
Roll Tarp - 30 Yard	6,048 gal	7,650 lbs

## DEWATERING BOXES

- Separating Applications
- Watertight Fluid & Solids Containment
- Standard 25 Yard Capacity
- Open & Closed Options Available



Type	Capacity	Tare
Dewatering Roll Tarp - 25 Yard	5,049 gal	6,950 lbs
Dewatering Metal Lid - 25 Yard	5,049 gal	17,260 lbs
Dewatering Vacuum Box - 25 Yard	5,000 gal	14,250 lbs

## VACUUM BOXES



- Ideal for Sludge & Solids Movement in Hydro Excavation, Manufacturing, and Paper Mills Applications
- Watertight Fluids & Solids Containment
- Standard 25 Yard Capacity



Type	Capacity
Vacuum Box - 25 Yard	5,000 gal

## TRASH BOXES



- Construction & Debris Removal Applications
- Non-Watertight Fluids & Solids Containment
- 20, 25, 30, 40 Yard Capacities Available



Type	Capacity	Tare
Trash Box - 25 Yard	5,049 gal	6,950 lbs
Trash Box - 30 Yard	6,048 gal	7,650 lbs
Trash Box - 40 Yard	8,080 gal	8,100 lbs



## MORE NTE PRODUCTS



### Filter Pots

- > 2 - 12" Sizes
- > Dual-Trailer or Single-Skid Models
- > Side-Inlet/Outlet
- > ASME Certified
- > Differential Pressure Gauge
- > Low Pressure Positive Seal
- > Stainless Steel Perforated Basket



### Sand Media Filters

- > (4) 8" Skid Mounted Media Filters
- > For the Removal of Suspended Organic & Inorganic Solids from Water Down to 20 Microns
- > Inlet Manifold/Top-Inlet
- > Stainless Steel Wedgewire Underdrain



### DEF Cubes




### Fuel Cubes



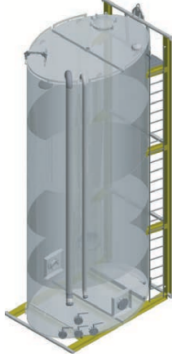
### Containment Berms



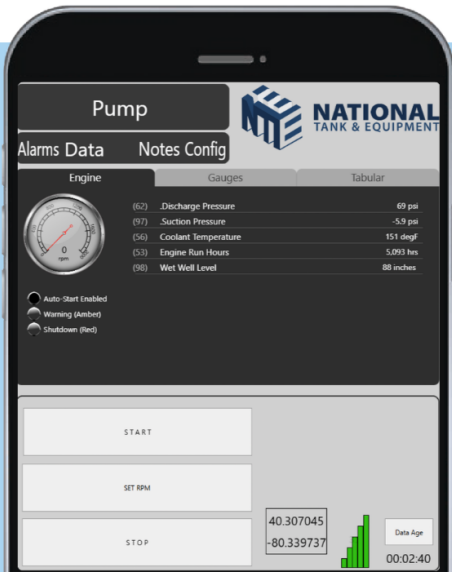
## RELIABLE. SAFE. ACCESSIBLE.



Real-time monitoring and (optional) remote control. Alarm notifications via call, text, or email. Visibility for pump and system parameters. Self-contained & powered.



Monitor tank levels, flow rates, pH, and temperature. Automatically generate reports for current, average, and accumulated parameters.



## Monitoring & Automation

- > Cloud based interface accessible from phone, tablet, or computer
- > Start/Stop and throttle pumps
- > Programmable alarms and auto shutdowns
- > Calculate daily min/max and average volumes
- > Minimize labor with remote control or autonomous operation
- > Verification and validation of system performance



## FABRICATION FACILITY

# 40,000

Square Foot Facility  
in Houston, Texas



In-House Resources  
to Fabricate  
**CUSTOM  
PUMP  
PACKAGES**

## QUICKER

Response to  
Customer Needs

## REDUCED

Cost and  
Turnaround Time





**FLUID SOLUTIONS  
YOU CAN COUNT ON**



Many elements go into delivering a complete fluid solution. Having a complete understanding of environmental variables is one element. Engineering a system that efficiently and effectively maximizes the equipment utilized and the variables presented is another. Finally, knowing the equipment's capabilities and making modifications on the fly is critical to success.

At NTE, we master each step of the process, delivering unique pump, storage, and filtration systems designed to meet individual job requirements.

***ALWAYS LEAD, NEVER FOLLOW***

