



# Product Guide

PUMPS • TANKS • FILTRATION

**NATIONAL**  
TANK & EQUIPMENT

[nterents.com](http://nterents.com)  
888.213.7950

# Complete Fluid Solutions

When you need fluid solutions, count on NTE to offer the support for your industrial or commercial job site.

With branches throughout the United States and the newest and fastest-growing fleet in the industry, you can count on NTE to provide the equipment & expertise to get the job done.



## NTE Works For You 24/7/365



**RENTAL**



**SALES**



**SERVICE**



**SOLUTIONS**



## Our Industries

- ✓ Industrial
- ✓ Environmental
- ✓ Waste Management
- ✓ Energy
- ✓ Oil & Gas

## Our People

We know fluid solutions and are prepared to take on any job, any time, anywhere.

We've cultivated our team to serve as both product and industry experts.



## Our Fleet

We have the most meticulously inspected and highest-quality fleet in the market plus our strong relationships with the best manufacturers in the business.

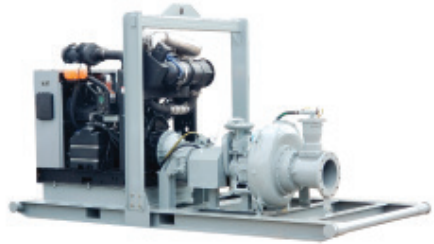


## Our Solutions

Delivering efficient and effective fluid solutions is more of a science than ever before. We make precise work of building custom solutions that meet your job-specific requirements.



# High Volume Pumps



Our fleet of high-volume pumps are robustly designed to exact specifications through a thorough engineering process undertaken in collaboration with top manufacturers. Best-in-class run-dry mechanical seals and rapid pump priming systems allow for peak performance across various applications.

- ✓ **Vac-Assisted Packages 4" – 18"**
- ✓ **Flow Rates up to 18,000 GPM**
- ✓ **Total Dynamic Head up to 250/108 PSI**
- ✓ **Programmable Auto-Start/Stop Panels**
- ✓ **Stainless & Electric Options Available**

## Specifications

NTRENTS.COM • 888.213.7950

Size in.	Max Flow GPM	Max TDH ft.	Max Solids in.
4 × 4	1300	122	3
6 × 6	2400	200	3
Super 6 × 6	2800	295	3
8 × 8	4000	250	3.38
12 × 12	6300	225	4
14 × 14	12000	148	4.25
18 × 18	18000	220	4.5

# High Head Pumps



High pressure fluid handling requires special pump packages designed for high head applications. If your job requires pumping over long distances or overcoming a pressurized header system, we offer the high pressure pumps to handle it.

- ✓ **Vac-Assist Packages 4 - 12"**
- ✓ **Programmable Auto-Start/Stop Panels**
- ✓ **Flow Rates up to 12,000 GPM**
- ✓ **Stainless & Electric Options**
- ✓ **Total Dynamic Head up to 755'/327 PSI**

## Specifications

NTRENTS.COM • 888.213.7950

Size in.	Max Flow GPM	Max TDH ft.	Max Solids in.
4 × 3	675	700	0.78
5 × 3	950	350	0.75
6 × 3	1070	480	0.5
6 × 4	1700	525	1
Super 6 × 4	1300	755	0.88
8 × 6	3700	460	2
Super 8 × 6	4250	640	2
10 × 8	5100	350	3.38
Super 10 × 8	8000	450	4
12 × 8	12000	720	3
12 × 10	11000	550	4

# Specialty Pumps



**Stainless Steel Pumps** manage a wide range of chemicals and temperatures.

**Electric Driven Pumps** reduce operating costs and are a reliable pump option.

**Variable Frequency Drives (VFDs)** create efficiencies and provide energy savings.

# Sound-Attenuated Pumps



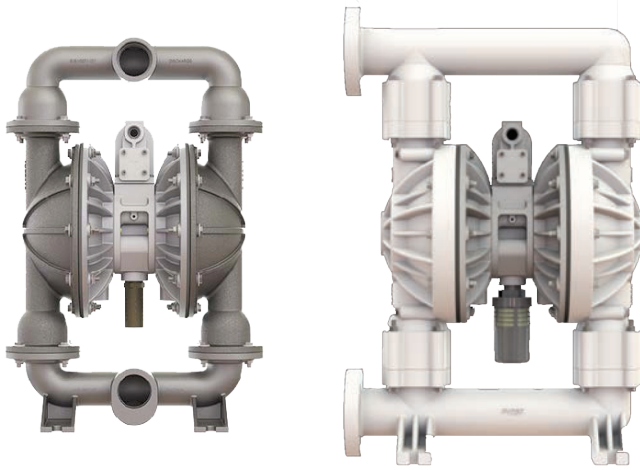
Registering at a comfortable 68 dBa at 23 feet, silent pumps deliver all the performance of our standard fleet in a fully enclosed, skid or trailer-mounted unit.

## Specifications

NTRENTS.COM • 888.213.7950

Size in.	Max Flow GPM	Max TDH ft.	Max Solids in.
4 × 4	1300	122	3
6 × 6	2400	200	3
8 × 8	4000	250	3.38
12 × 12	6300	225	4
14 × 14	13800	178	4.25
18 × 18	13800	178	4.25
Super 18 × 18	18000	220	4.5

# Air-Operated Diaphragm Pumps



These easy to install, portable pumps are a versatile option for a variety of pump applications. With various material construction and sizes available, let NTE help find the right AOD pump to meet your intermittent fluid transfer demands.

## Specifications

[NTERENTS.COM](http://NTERENTS.COM) • 888.213.7950

Size in.	Material	Max Flow GPM	Operating PSI	Weight lbs.
1	Aluminum/Buna	49	125	27
1	Polypropylene/Teflon	36	100	17
1	StainlessSteel/Teflon	38	125	38
2	Aluminum/Buna	185	125	65
2	Polypropylene/Teflon	145	100	69
2	Stainless Steel/Teflon	157	125	114
3	Aluminum/Buna	234	125	108
3	Polypropylene/Teflon	280	100	208
3	Stainless Steel/Teflon	186	125	245

# Specialty Pumps



The Sludgemaster is designed to pump highly viscous materials and the toughest slurries with ease.

- ✓ 4" Suction & Discharge
- ✓ 250 GPM Max Flow
- ✓ 346' Max TDH
- ✓ 3.5" Solids Handling Capacity

# Hydraulic Submersible Pumps



Ideal for pump applications where suction lift exceeds 28 feet or where suction lifts are too great for standard centrifugal pumps, hydraulic submersible pumps are designed to handle high volumes of water, sludge, trash, raw sewage, and industrial effluent.

## Specifications

NTRENTS.COM • 888.213.7950

Size in.	Max Flow GPM	Max TDH ft.	Max Solids in.
3 × 3	400	73	0.75
4 × 4	1000	175	3.5
6 × 6	1900	125	3



## Electric Submersible Pumps



Electric submersible pumps are capable of handling all types of hazardous and non-hazardous fluids as well as viscous slurries with ease.

- ✓ 2 - 10" Sizes
- ✓ Max Flow 5,500 GPM
- ✓ Max 340' TDH/147 PSI
- ✓ 2 - 94 Horsepower
- ✓ Auto Start/Stop Control Panel and Float Switches
- ✓ Built-In Thermal Overload Protection
- ✓ Stainless Steel Models Available





## Chemical Hose

---

- › Size: 2 - 8"
- › Max PSI: 200
- › Tube Material: UHMW Polyethylene
- › Fittings: SST 150# Flange, SST Camlock



## Composite Hose

---

- › Size: 3-12"
- › Max PSI: 250
- › Tube Material: Multi-Layered Polypropylene Fabric
- › Fittings: 150# Flange, Camlock



## Layflat Hose

---

- › Size: 2 - 12"
- › Max PSI: 150
- › Tube Material: Oil-Resistant Rubber
- › Fittings: Camlock, Quick-Connect



## OSD Hose

---

- › Size: 3 - 14"
- › Max PSI: 250
- › Tube Material: Nitrile
- › Fittings: 150# Flange, 300# Flange



## Stainless Steel Braided Hose

---

- › Size: 3/4 - 12"
- › Max PSI: 200 - 400
- › Tube Material: 316 Stainless Steel
- › Fittings: 150# Flange, 300# Flange



## Tank Truck Hose

---

- › Size: 2 - 8"
- › Max PSI: 150
- › Material: Nitrile
- › Fittings: 150# Flange, Camlock, Quick-Connect



## Quick-Connect Pipe

- > Size: 4 - 12"
- > Max PSI: 175
- > Material: Laminated Steel



## HDPE Pipe

- > Size: 4 - 36"
- > Max PSI: 65 - 130
- > Material: DR 17 - DR 32

## Fittings





NTE's tanks and boxes can be utilized as temporary storage for a variety of industrial and commercial applications, including:

- ✓ Construction Runoff
- ✓ Cooling Tower Cleaning
- ✓ Wastewater Storage & Treatment
- ✓ Environmental Remediation
- ✓ Hydrotesting & Pipeline Integrity Testing
- ✓ Tank Cleaning
- ✓ Turnaround Temporary Storage

## Tanks



### Closed-Top Tanks

---

- > Vapor Tight Smooth Wall, Round Bottom, Steam Coil, Acid Frac, Mini Frac (200 BBL/8400 Gallon) Tanks Available
- > Standard 500 BBL/21,000 Gallon Capacity



### Open-Top Tanks

---

- > Weir Tanks, Gas Busters, Mud Tanks Available
- > 250, 400, 500 BBL/10,500, 16,800, 21,000 Gallon Capacities



### Double-Walled Tanks

---

- > For Specialty Fluid Storage Applications
- > Built-In Secondary Containment for Environmental Protection
- > Standard 450 BBL/18,900 Gallon Capacity

## Tanks



### Stainless Steel Tanks

---

- > Hazardous & Non-Hazardous Fluid Storage
- > Containment When Temperature & Fluid pH Are Factors
- > Standard 500 BBL/21,000 Gallon Capacity



### Mix Tanks

---

- > Steam Coil Options Available
- > Standard 500 BBL/21,000 Gallon Capacity
- > Vertical Mix Tanks Offer 350 BBL/14,700 Gallon Capacity



### Poly Tanks

---

- > Portable with Steel Cage Protection
- > Caustic or Acidic Fluid Containment
- > 150 BBL/6300 (Single), 300 BBL/12,600 (Double) Gallon Capacities



### Stainless Steel Tanker Trailers

---

- > Industrial Storage/Waste Transport Applications
- > 316 Stainless Steel Construction
- > Liquid Level Gauge
- > 2" Vapor Recovery Line
- > Standard 167 BBL/7,000 Gallon Capacity

# VERTICAL FRAC TANKS



The advantages of vertical frac tanks are numerous. Their smaller footprint allows for maximum fluid storage in tight spaces. They are also easily transportable, eliminating costly and time intensive load permits.

- ✓ **Optimizes Storage in a Smaller Footprint**
- ✓ **Steam Coil Options Available**
- ✓ **Standard 350 BBL/14,700 Gallon Capacity**
- ✓ **Level Monitoring and Alerts**

## Boxes



### Roll Off Boxes

---

- › Tarp or Watertight Options Available
- › 25 Yard Capacity



### Dewatering Boxes

---

- › Separating Applications
- › Watertight Fluid & Solids Containment
- › Standard 25 Yard Capacity
- › Open & Closed Options Available



### Vacuum Boxes

---

- › Ideal for Sludge & Solids Movement in Hydro Excavation, Manufacturing, and Paper Mills Applications
- › Watertight Fluids & Solids Containment
- › Standard 25 Yard Capacity



### Trash Boxes

---

- › Construction & Debris Removal Applications
- › Non-Watertight Fluids & Solids Containment
- › 20, 25, 30, 40 Yard Capacities Available





## Filter Pots

- > 2 - 12" Sizes
- > Dual-Trailer or Single-Skid Models
- > Side-Inlet/Outlet
- > ASME Certified
- > Differential Pressure Gauge
- > Low Pressure Positive Seal
- > Stainless Steel Perforated Basket



## Sand Media Filters

- > (4) 8" Skid Mounted Media Filters
- > For the Removal of Suspended Organic & Inorganic Solids from Water Down to 20 Microns
- > Inlet Manifold/Top-Inlet
- > Stainless Steel Wedgewire Underdrain



## DEF Cubes



## Fuel Cubes



## Containment Berms

# PUMP & TANK AUTOMATION

NTE offers equipment automation as well as remote pump operation, housed conveniently within weather-tight boxes with solar-powered options available. With a host of inputs and data points available to monitor, you can ensure your equipment and job site are operating at peak performance.

- ✓ Remote start, stop, and throttle control
- ✓ Fully automatic pump operation
- ✓ Alerts for start, stop, high level, low fuel, etc.
- ✓ Level monitoring, LED level monitoring, and alerts
- ✓ Data analytics and reporting
- ✓ Pressure shutdown and control



## Fabrication Facility

New 40,000 Square Foot  
Facility in Houston, Texas

In-House Resources to  
Fabricate Custom Pump  
Packages

Quicker Response to  
Customer Needs

Reduce Cost and  
Turnaround Time



# FLUID SOLUTIONS YOU CAN COUNT ON



Many elements go into delivering a complete fluid solution. Having a complete understanding of environmental variables is one element. Engineering a system that efficiently and effectively maximizes the equipment utilized and the variables presented is another. Finally, knowing the equipment's capabilities and making modifications on the fly is critical to success.

At NTE, we master each step of the process, delivering unique pump, storage, and filtration systems designed to meet individual job requirements.



**NATIONAL  
TANK & EQUIPMENT**

# The NTE Customer Commitment

'Always Lead, Never Follow' is the promise we make our customers. At NTE, we strive for excellence and integrity in everything we do. When our people go to work, we set the bar for safety, expertise, and commitment.

This guiding principle is how NTE was founded. From how we hire, to how we grow relationships, to how we care for equipment and your job site, the 'Always Lead, Never Follow' mantra is at the heart.

You can get equipment anywhere. You choose NTE because we lead the market and drive excellence.

## Always Lead, Never Follow.



NTE Nationwide Locations

**NTERENTS.COM • 888.213.7950**