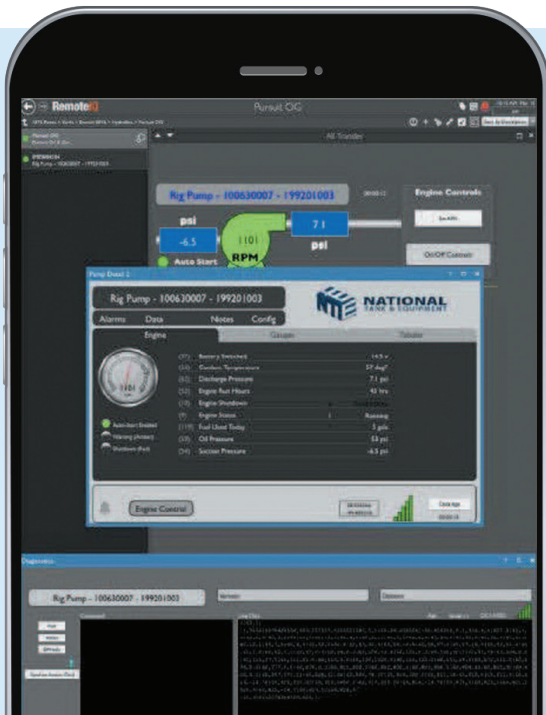




# PUMP AUTOMATION OVERVIEW

The pump automation system is housed inside a weather tight box that contains a telemetry unit, solar charger, battery and panel mounted connections for:

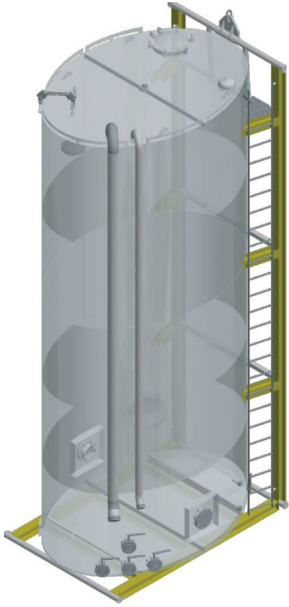
- ✓ Digital Inputs: On/Off Conditions, Floats, Flowmeter, Etc.
- ✓ Digital Outputs: Emergency Stop, Audible & Visible Alarm, Etc
- ✓ Analog Inputs: Level, Pressure, Flowmeters, Temperature, Etc.
- ✓ Modbus RTU: Flowbus, Temperature, Water Quality, Etc
- ✓ CANbus ECU (Engine Control Unit): Engine Diagnostics and Values
- ✓ Cellular w/ External Antenna: Verizon or AT&T LTE Service
- ✓ 40W Solar Panel: Connected to Pump Battery



## Monitoring & Control

- ✓ Fully autonomous operation or remote operator control
- ✓ System communicates via CANBus protocol to both the panel and ECU allowing the operator to:
  - ✓ View all engine & pump data (RPM, Pressures, Temperatures, Key State, Etc)
  - ✓ Start/Stop pump engine via web dashboard
  - ✓ Automatically perform emergency stops
  - ✓ View translated ECU Diagnostics
- ✓ Alerts via Phone/Text/Email for start/stop, high/low, and other user definable parameters

# TANK AUTOMATION OVERVIEW



The tank monitoring system is housed inside an easily deployable weather tight box that can be powered by 110v AC or solar power.

- ✓ Digital Inputs: On/Off Conditions, Floats, Flowmeter, Etc.
- ✓ Digital Outputs: Emergency Stop, Audible & Visible Alarm, Etc
- ✓ Analog Inputs: Level, Pressure, Flowmeters, Temperature, Etc.
- ✓ Modbus RTU: Flowbus, Temperature, Water Quality, Etc
- ✓ Cellular w/ External Antenna: Verizon or AT&T LTE Service

## Monitoring & Alerts

- ✓ Remotely view multiple tank levels
- ✓ Tank levels can be displayed in height or volume
- ✓ Alerts via Phone/Text/Email for start/stop, high/low, and other user definable parameters
- ✓ Display page can be integrated into the same job profile as pumps



RENTAL



SALES



SERVICE



SOLUTIONS

