



STANDARD FEATURES

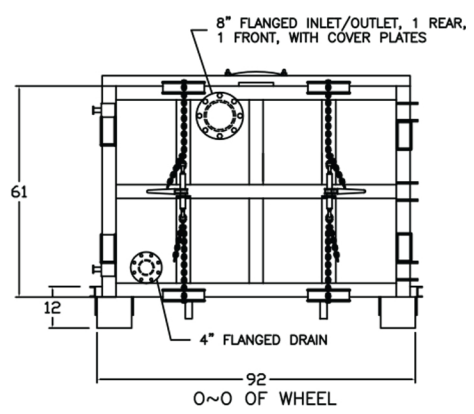
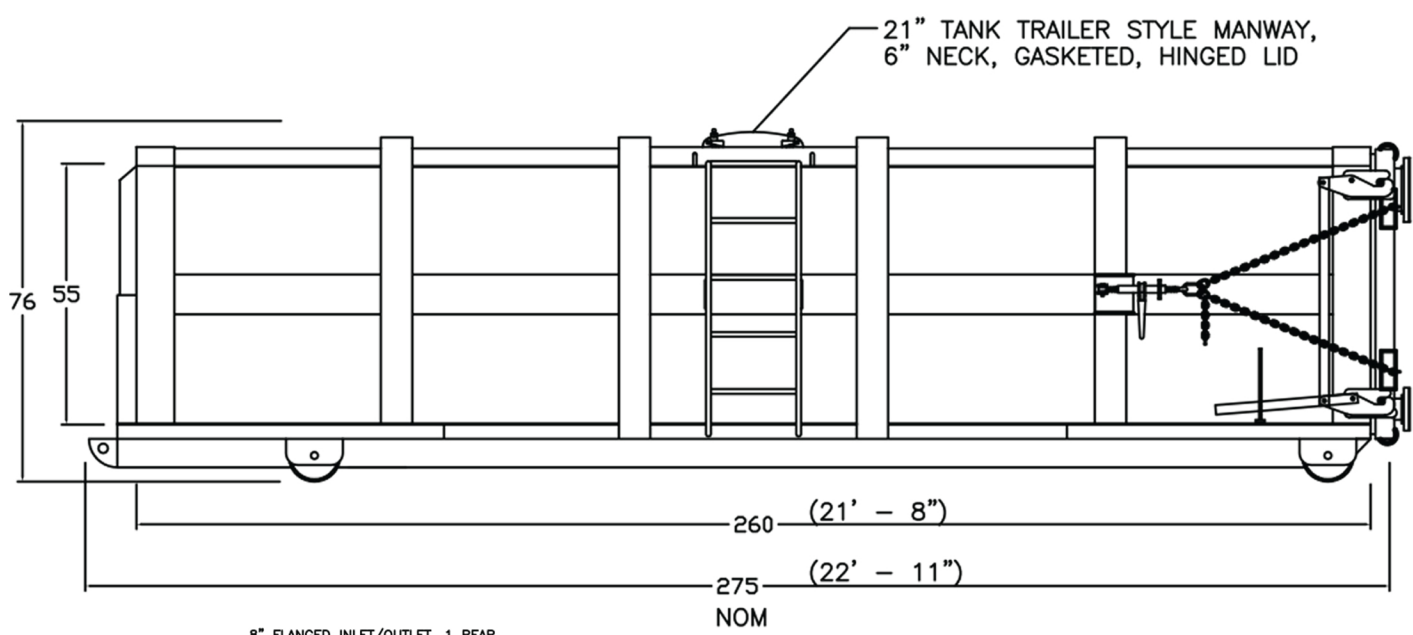
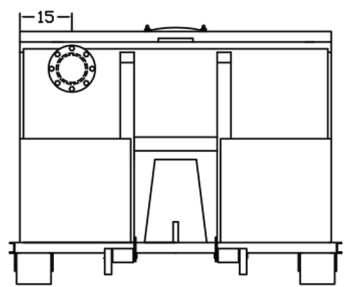
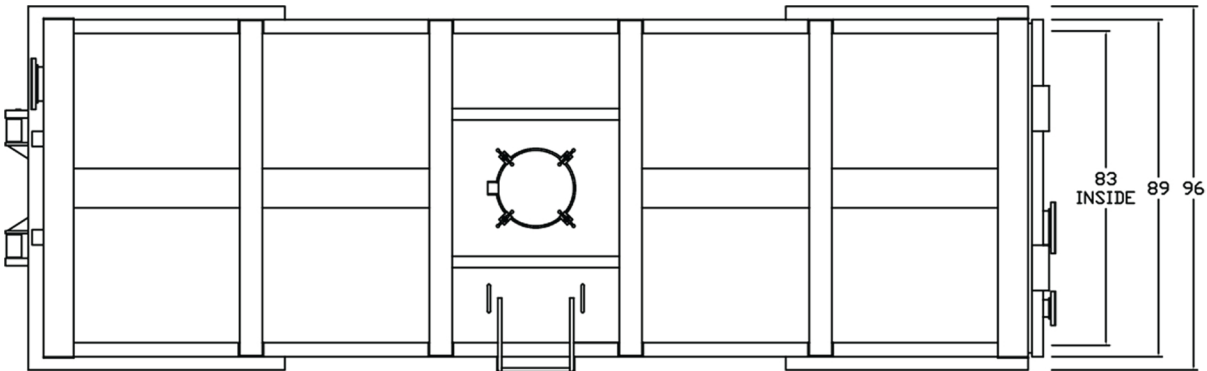
- **FLOOR:** 1/4 PL ONE PIECE
- **CROSSMEMBERS:** 3 X 4.1 CHANNEL 12" ON CENTER
- **WALLS/ROOF:** 1/4 PL SOLID WELDED, INSIDE LINER HOOKS
- **STRUCTURE:** TUBING & FORMED CHANNEL SUPPORTS
RATED TO OPERATED AT 30" HG
- **DOOR:** 1/4 PL WITH TUBING FRAME
- **FRONT:** 1/4 PL WITH PUSH PLATES
- **PICK UP:** STANDARD CABLE WITH 2 X 6 X 1/4 RAILS, GUSSET AT EACH CROSS MEMBER
- **WHEELS:** 4 EACH 10 DIA X 9 LONG WITH GREASE FITTINGS
- **DOOR LATCH:** 4 INDEPENDENT RATCHET BINDERS WITH CHAINS, VERTICAL 2ND LATCH
- **GASKETS:** EXTRUDED RUBBER SEAL W/ METAL RETAINERS
- **WELDS:** ALL WELDS CONTINUOUS EXCEPT SUBSTRUCTURE CROSSMEMBERS
- **FINISH:** COATED INSIDE & OUT WITH DIRECT TO METAL, RUST INHIBITING ACRYLIC ENAMEL COLOR COAT
- **HYDROTESTING:** FULL CAPACITY STATIC TEST
- **DIMENSIONS:** 22'-11" LONG (21'8" INSIDE), 94" WIDE (83" INSIDE), SEE DRAWING FOR HEIGHT
- **OPTIONS:** STEEL GRIT BLAST & SPECIAL PAINT, AMPLIROLL, HEIL AND DINO PICK UP



NATIONAL
TANK & EQUIPMENT

VACUUM BOX

SPECIFICATIONS



NATIONAL
TANK & EQUIPMENT

FOR MORE INFO : NTERENTS.COM | 888.213.7950