

POLY TANK



STANDARD FEATURES

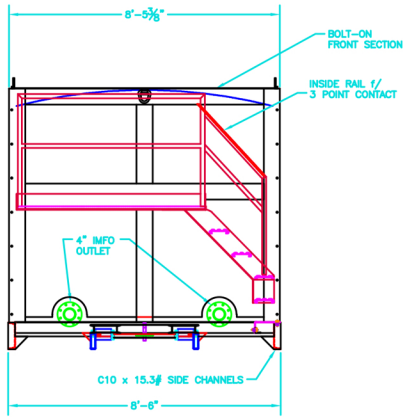
- CONSTRUCTED WITH HIGH DENSITY XLPE
- ROTOMOLDED FOR SEAMLESS CONSTRUCTION
- OR-1000 FOR ADDED RESISTANCE/DURABILITY
- DUAL IMFO OUTLETS FOR FULL DRAINAGE
- CAPACITY: 6,300 GALLONS



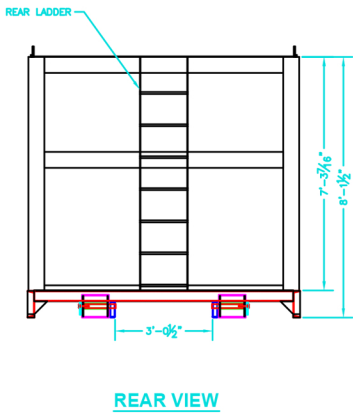
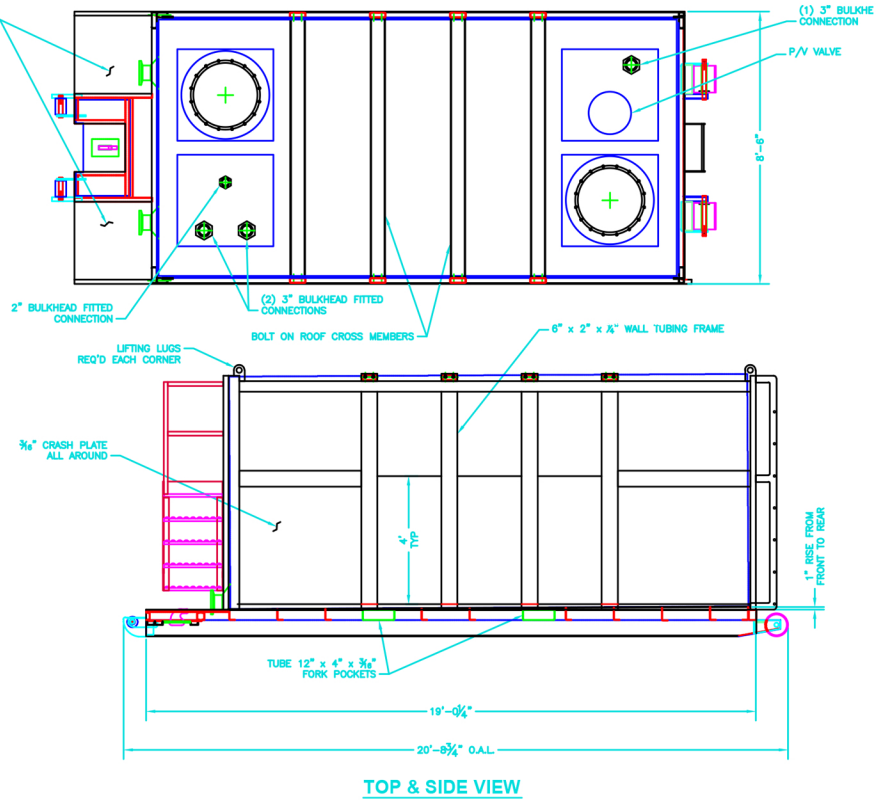
NATIONAL
TANK & EQUIPMENT

FOR MORE INFO : NTERENTS.COM | 888.213.7950

POLY TANK



FLOOR CUT-OUT FOR FLANGE CLEARANCE PLATFORM NOT SHOWN FOR CLARITY

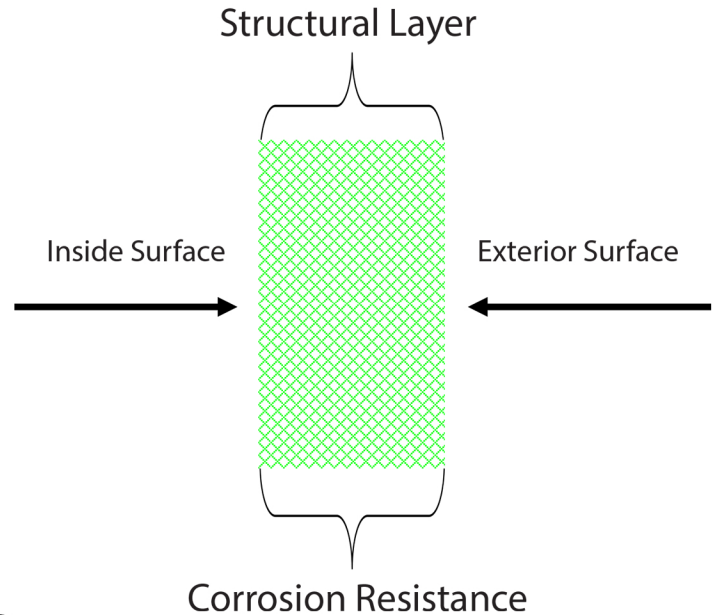


POLY PROCESSING

XLPE ADVANTAGES:

CROSSLINKED POLYETHYLENE TANKS PROVIDE A BROAD RANGE OF CHEMICAL RESISTANCE, WHILE SIMULTANEOUSLY DEMONSTRATING THE PHYSICAL PROPERTIES REQUIRED TO MEET THE MOST DEMANDING INSTALLATIONS.

- CHEMICAL BARRIER ALSO MAKES UP THE STRUCTURAL ELEMENT OF THE TANK
- ENGINEERED PRODUCTION CONTROLLED BY AUTOMATED PROCESS
- REDUCES OPERATIONAL COSTS BY ELIMINATING REPAIR AND REQUIRED MAINTENANCE



ROTO MOLDING: PRODUCES A SEAMLESS PART THIS A SOUND, ECONOMIC ALTERNATIVE TO CURRENT MARKET OFFERINGS